

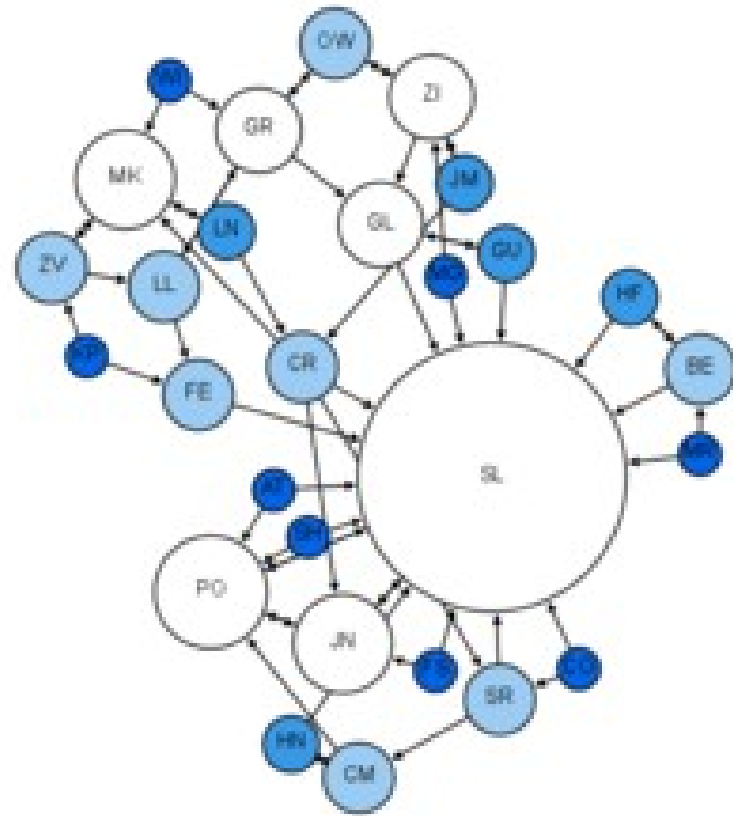
Lichtkind

Cellgraph

Lichtkind.de


Schöne
Spielzeuge

Gra(f|ph)




Seriöser Autor

meta::cpan About grep::cpan Recent News FAQ Tools API




LICHTKIND
Herbert Breunung

✉ lichtkind@cpan.org
🔗 kephra.sourceforge.net



ACTIVITY



24 month

All Releases

TOOLS

- CPANTesters Reports 📅
- CPANTS
- Module permissions
- MetaCPAN Explorer
- CPAN directory (10)
- BackPAN directory (207)

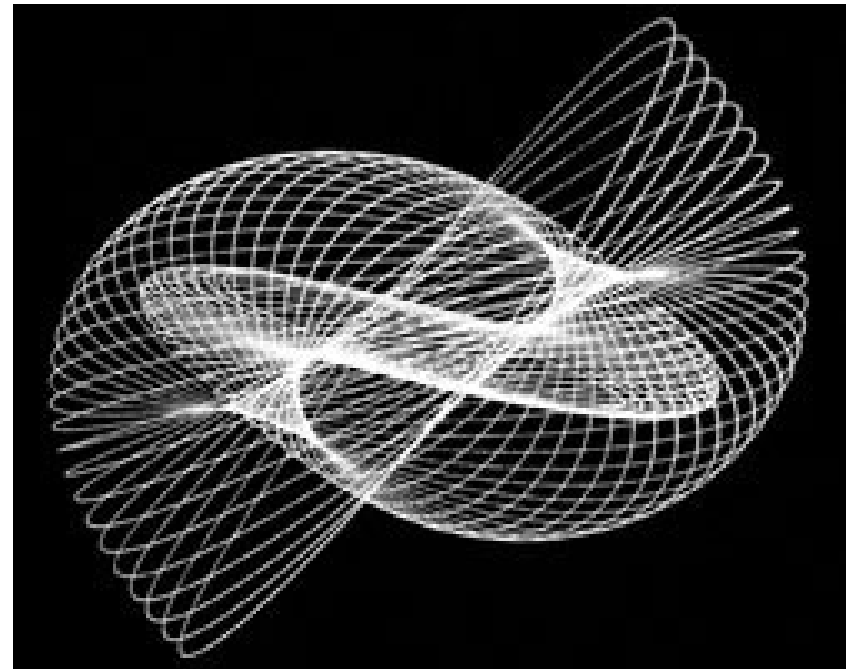
10 distributions uploaded by Herbert Breunung (LICHTKIND)

All Releases by Herbert Breunung

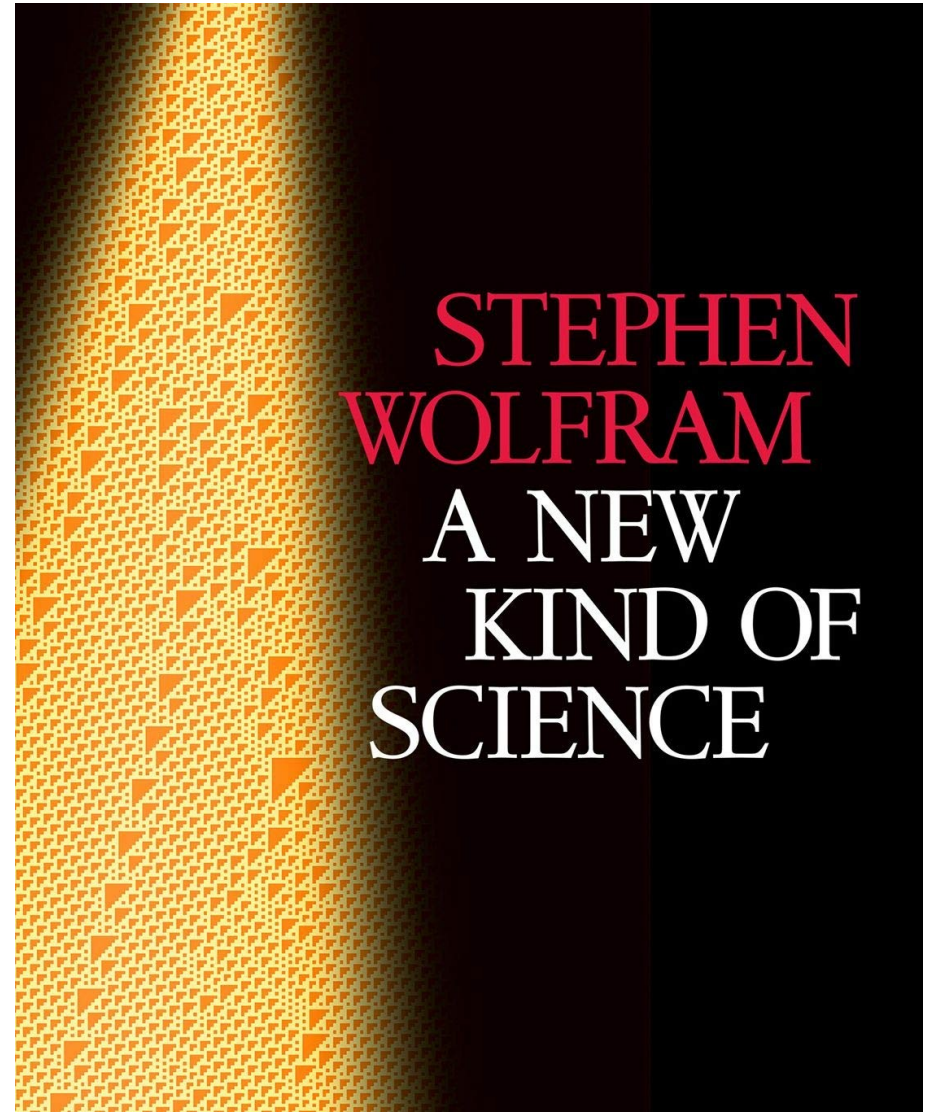
Release	
App-GUI-Cellgraph-0.2	draw pattern by cellular automata
Graphics-Toolkit-Color-1.08	color palette creation helper
Kephra-0.404	compact, effective and beautiful coding editor
Chart-v2.403.9	a series of charting modules
Alien-Font-Uni-0.3	access to Unifont truetype file
Tie-Wx-Widget-1.01	implicit access value of a Wx widget
Bundle-Graphics-ColorNames-1.06	all color scheme modules with english names
Graphics-ColorNames-GrayScale-3.0	RGB values of shades of gray and base colors
Graphics-ColorNames-Pantone-0.54	RGB values of Pantone colors
App-GUI-Harmonograph-0.57	sculpting beautiful circular drawings

Favorites
No favorite distributions from LICHTKIND could be found

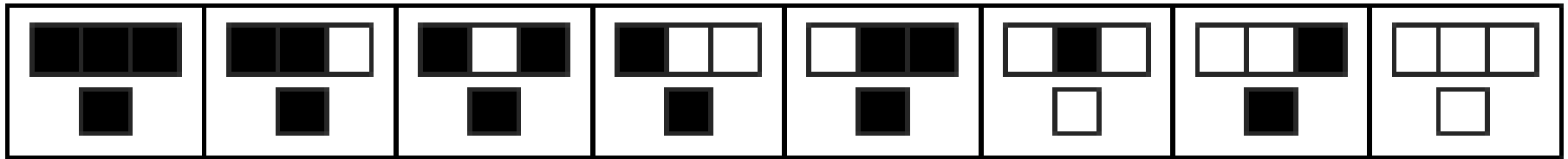
Harmonograph



Auslöser

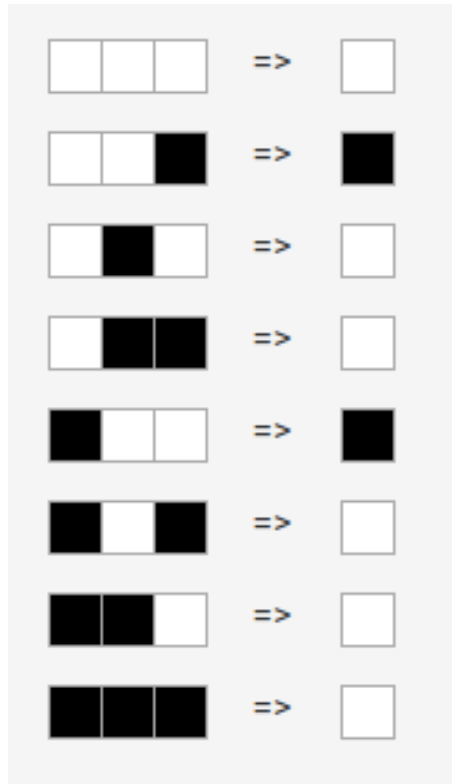


Automat (f)

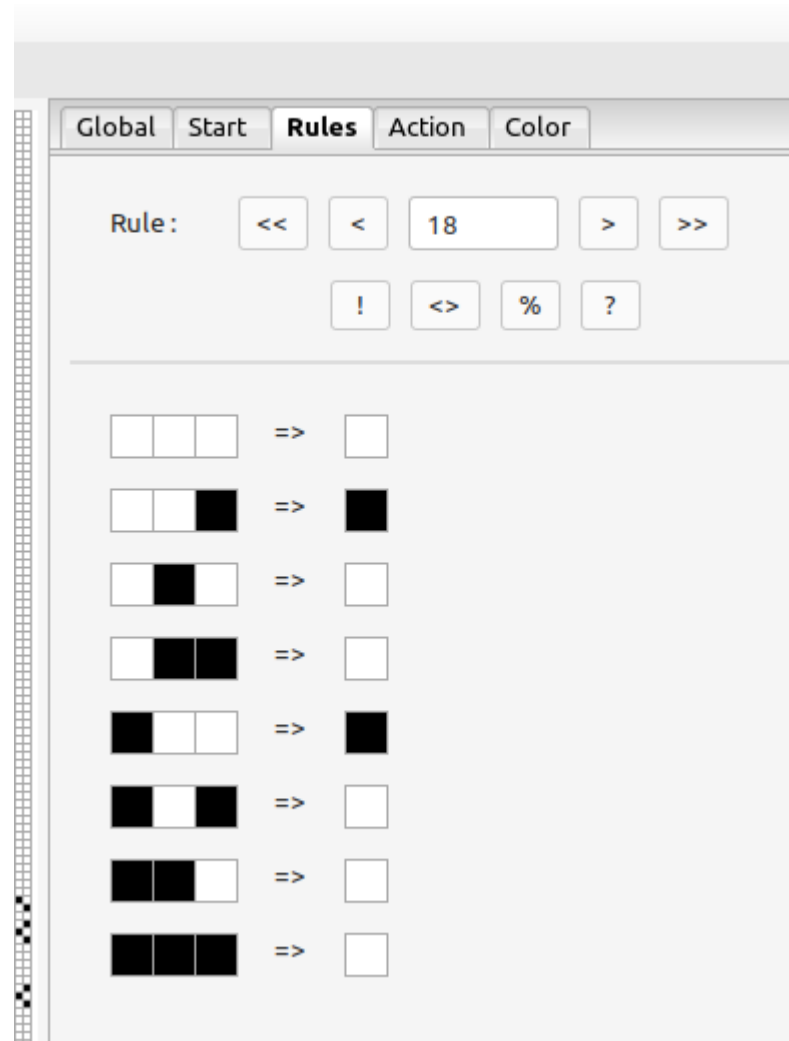


rule 250

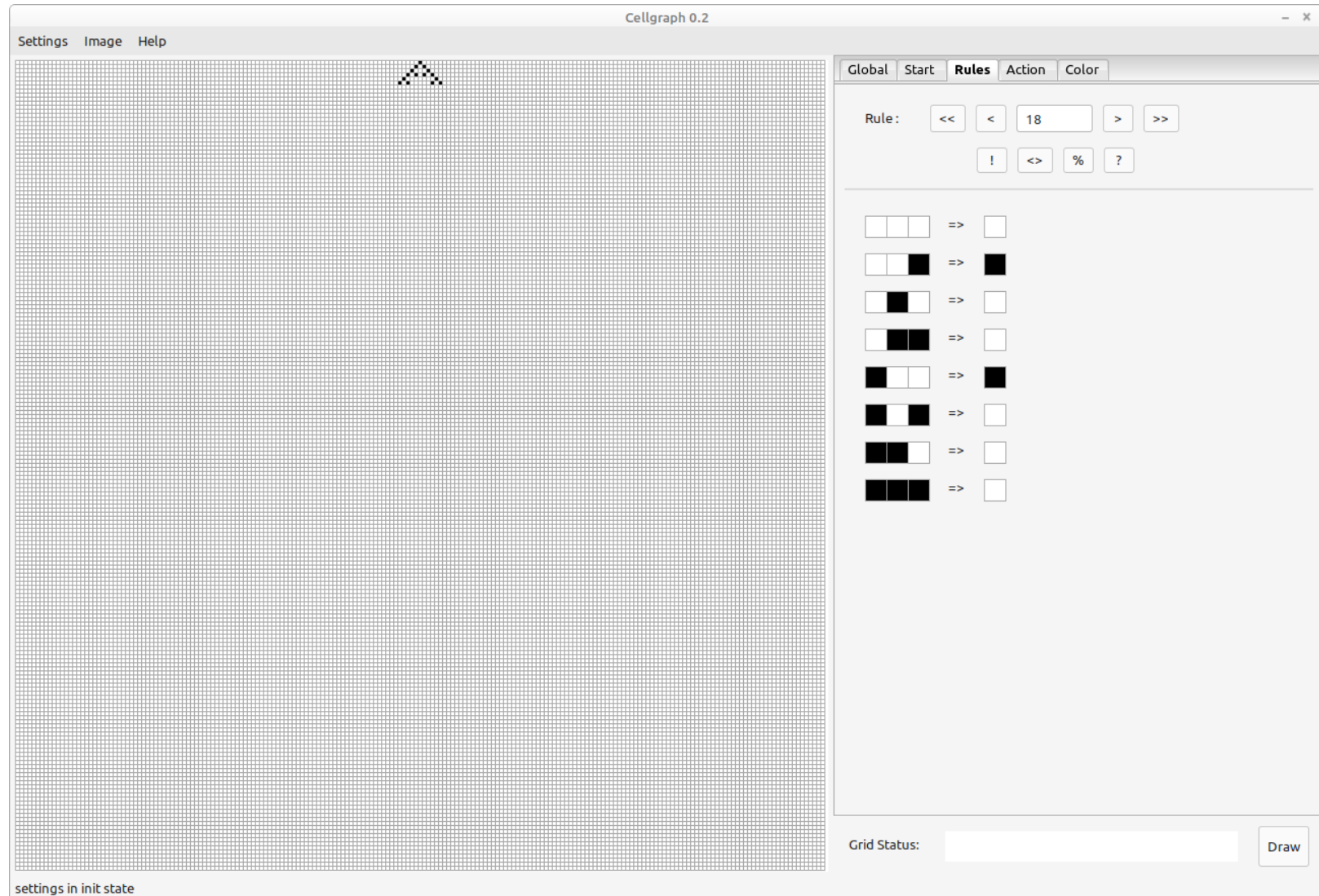
App::GUI::Cellgraph



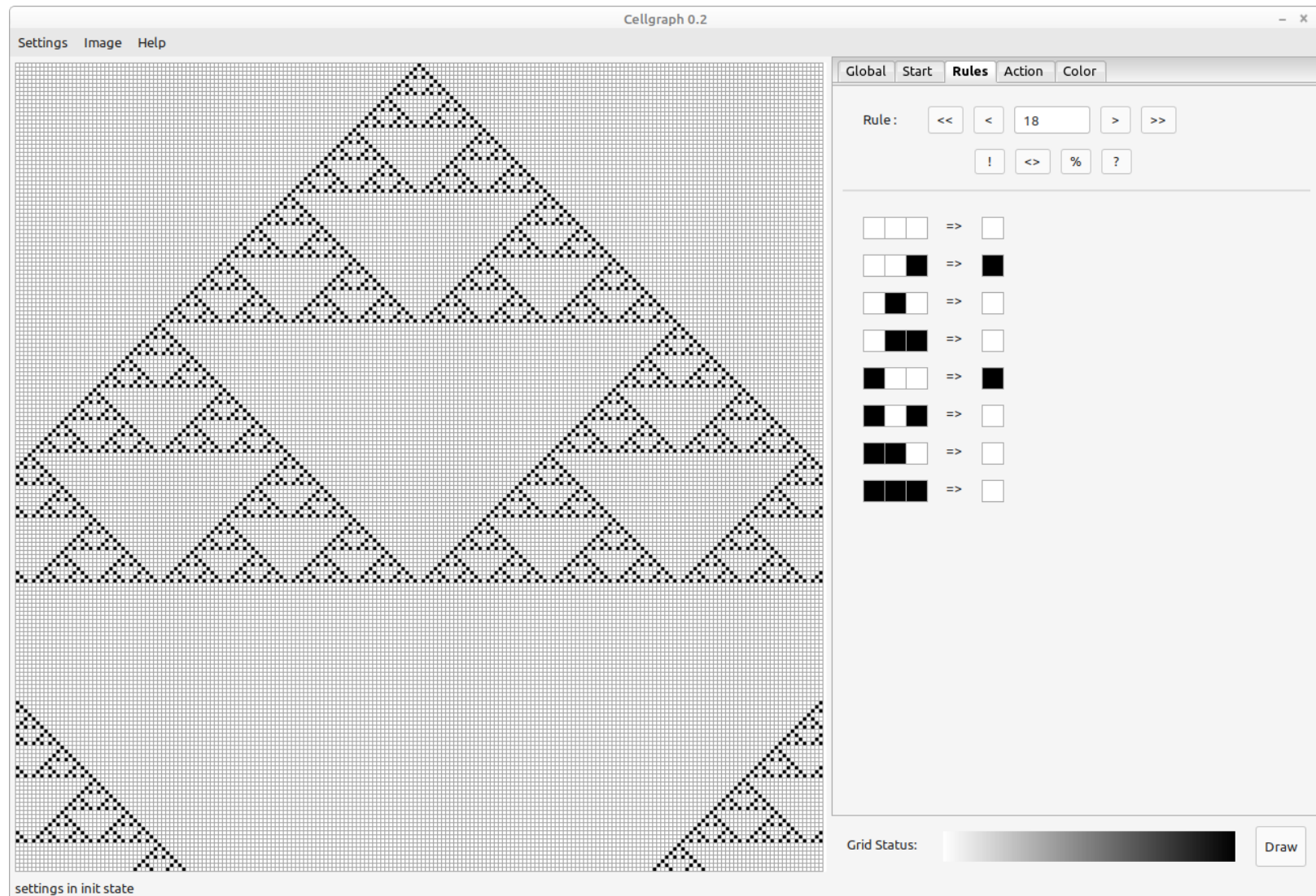
Regeln



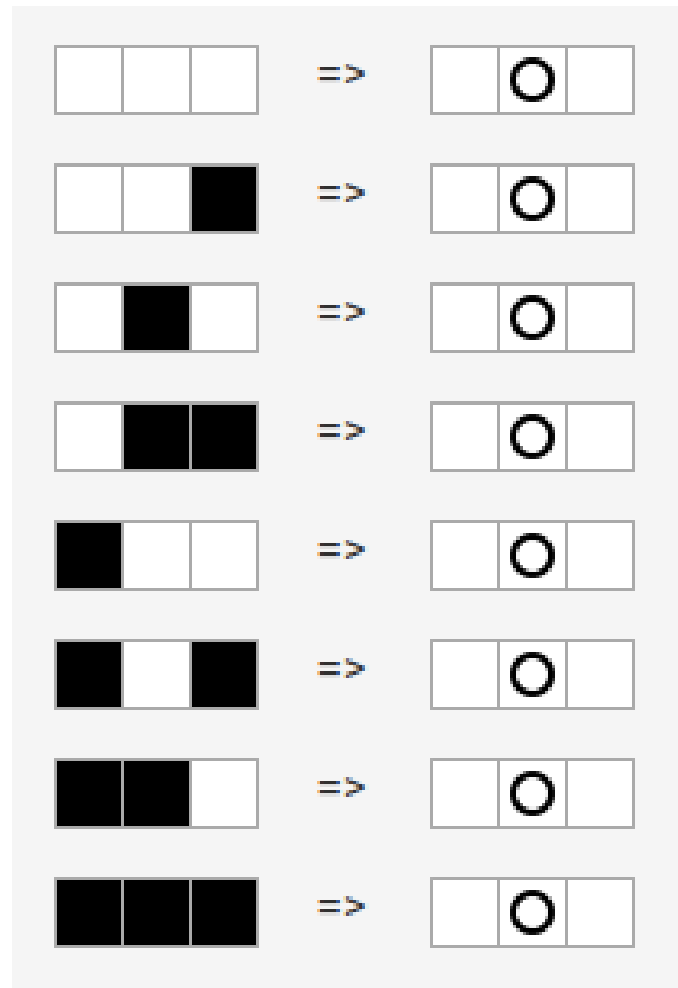
Seriöser Autor



Oberfläche



Action !



Startreihe

Global **Start** Rules Action Color

First Row: < 1 > 1 ?

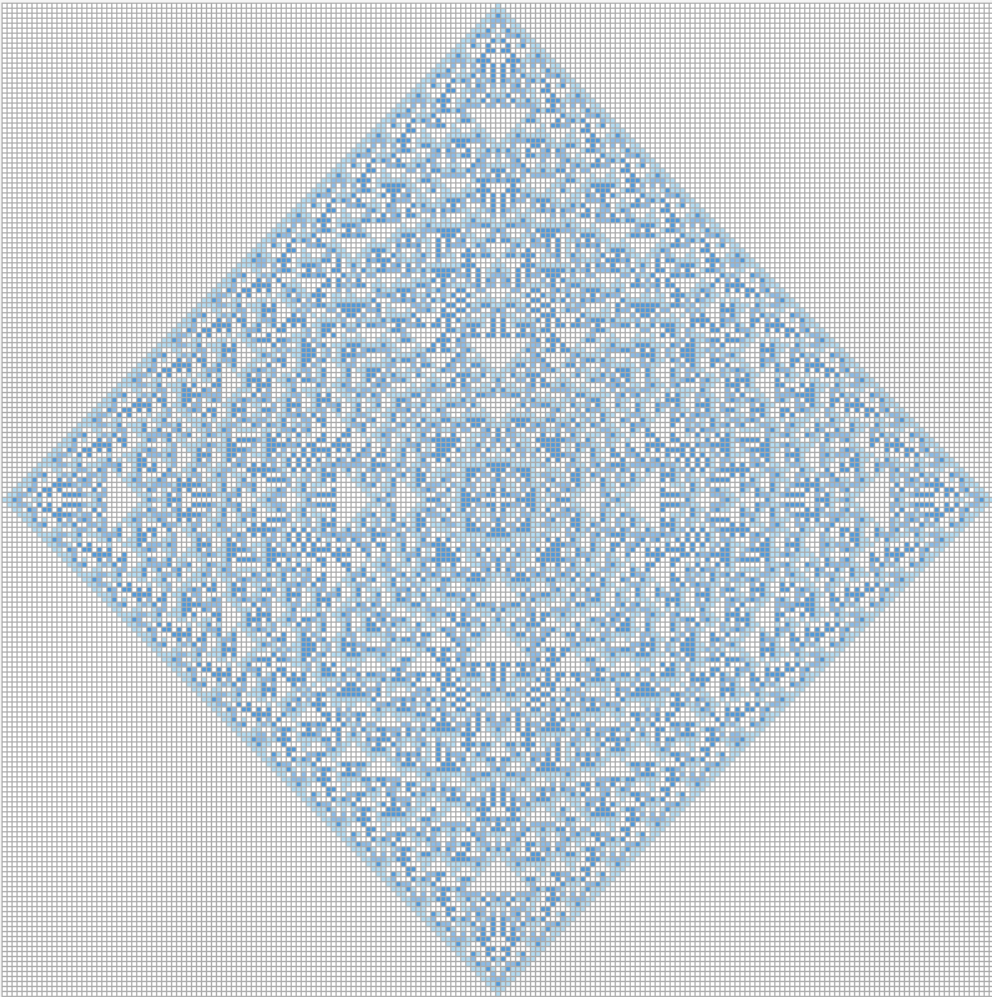
■																			
---	--	--	--	--	--	--	--	--	--	--	--	--	--	--	--	--	--	--	--

Repeat

Farben

Cellgraph 0.2

Settings Image Help



Global Start Rules Action **Color**

Color Set Store

bunt

Colors Set Function

Gray Gradient 1 0 0

Currently Used State Colors

Selected State Color

R 179 - +

G 220 - +

B 243 - +

H 202 - +

S 73 - +

L 83 - +

Color Store

airyblue

Grid Status:

settings in init state

Detailed description: The image shows a screenshot of the 'Cellgraph 0.2' software interface. The main window displays a large, diamond-shaped fractal pattern composed of small blue squares on a grid. The interface includes a menu bar with 'Settings', 'Image', and 'Help'. The 'Color' tab is active, showing a 'Color Set Store' with a dropdown menu set to 'bunt' and buttons for 'Load', 'Del', 'Save', and 'New'. Below this is a 'Colors Set Function' section with 'Gradient' selected, a value of '1', and 'Complement' buttons. The 'Currently Used State Colors' section shows a row of color swatches, with the first one selected. The 'Selected State Color' section has sliders for RGB (R: 179, G: 220, B: 243) and HSL (H: 202, S: 73, L: 83) values. At the bottom, there is a 'Color Store' section with a dropdown set to 'airyblue' and 'Load', 'Del', and 'Save' buttons. A 'Grid Status' section at the very bottom shows a color gradient bar and a 'Draw' button. The text 'settings in init state' is visible in the bottom left corner of the window.

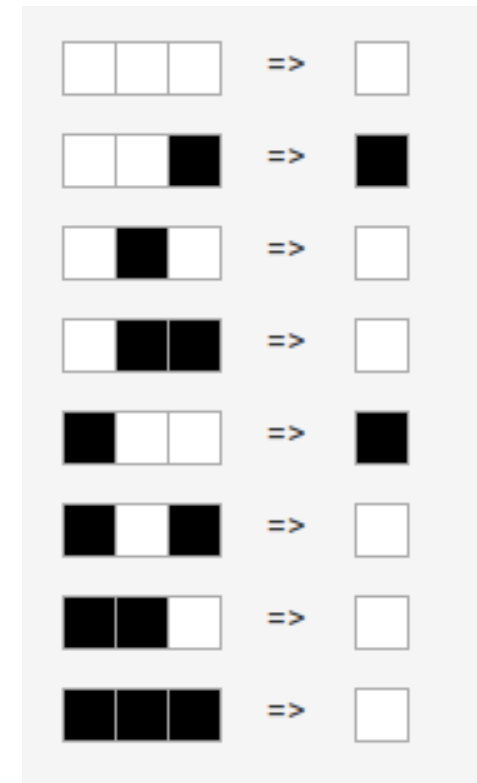
Die Macht !

Global Start Rules Action Color

Grid Style: lines Size: 3

Direction: top_down Circular

Rule Input: 3 Cell States: 2



5 Zustände !

Grid Style:

lines



Size:

3



Direction :

top_down



Circular

Rule Input:

3



Cell States :

5



243 Teilregeln!

Grid Style:

lines



Size:

3



Direction :

top_down



Circular

Rule Input:

3

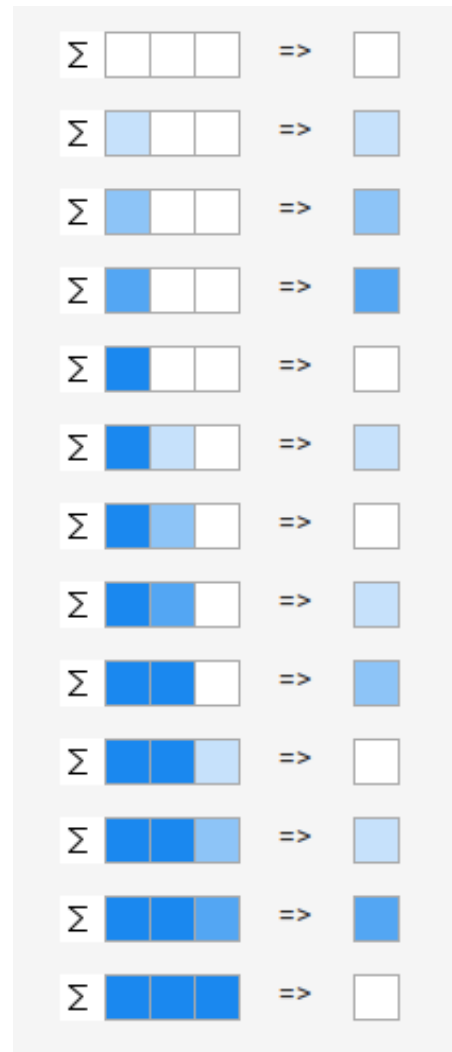


Cell States :

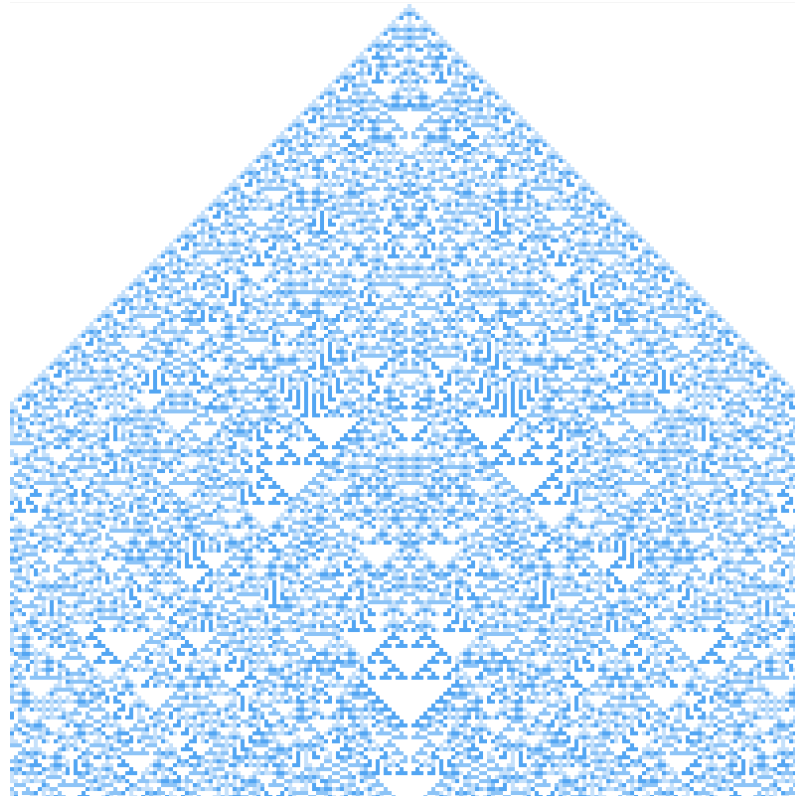
5



5 Zustände !

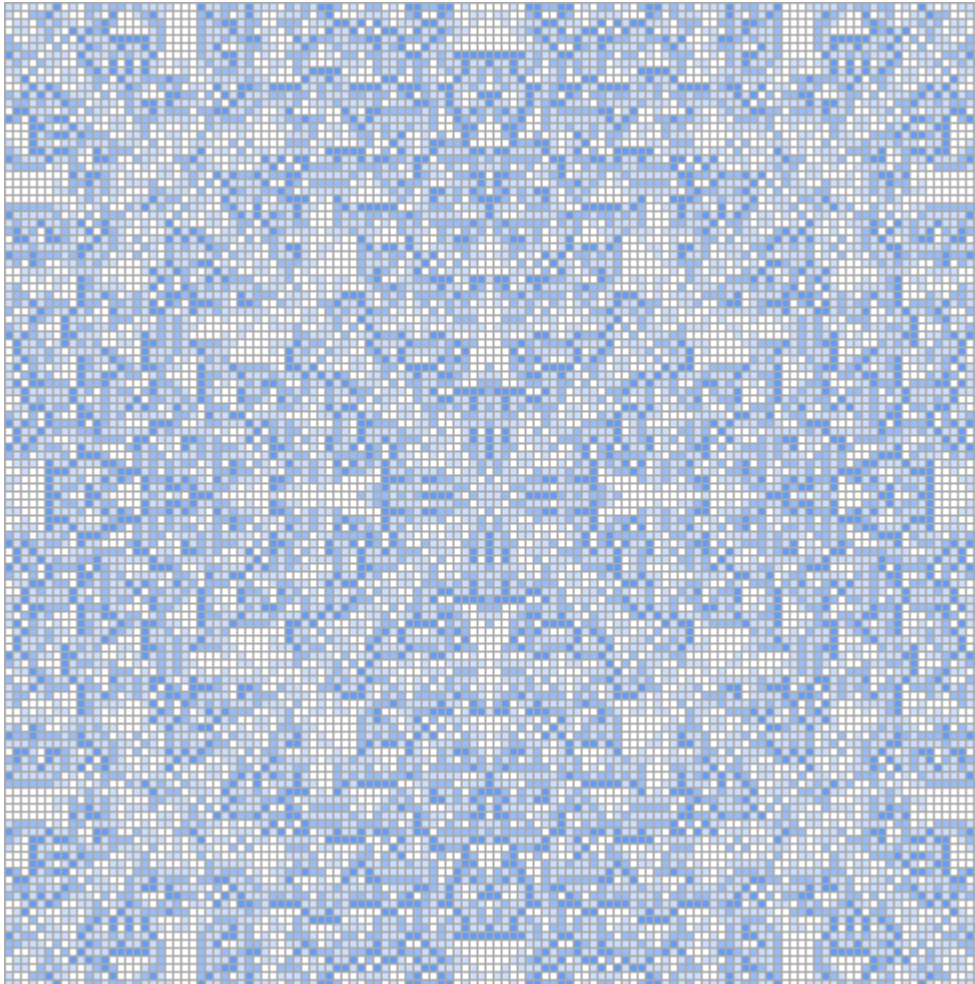


5 Zustände !



Σ		\Rightarrow	
Σ		\Rightarrow	
Σ		\Rightarrow	
Σ		\Rightarrow	
Σ		\Rightarrow	
Σ		\Rightarrow	
Σ		\Rightarrow	
Σ		\Rightarrow	
Σ		\Rightarrow	
Σ		\Rightarrow	
Σ		\Rightarrow	
Σ		\Rightarrow	
Σ		\Rightarrow	
Σ		\Rightarrow	

4 v.i.n.a !



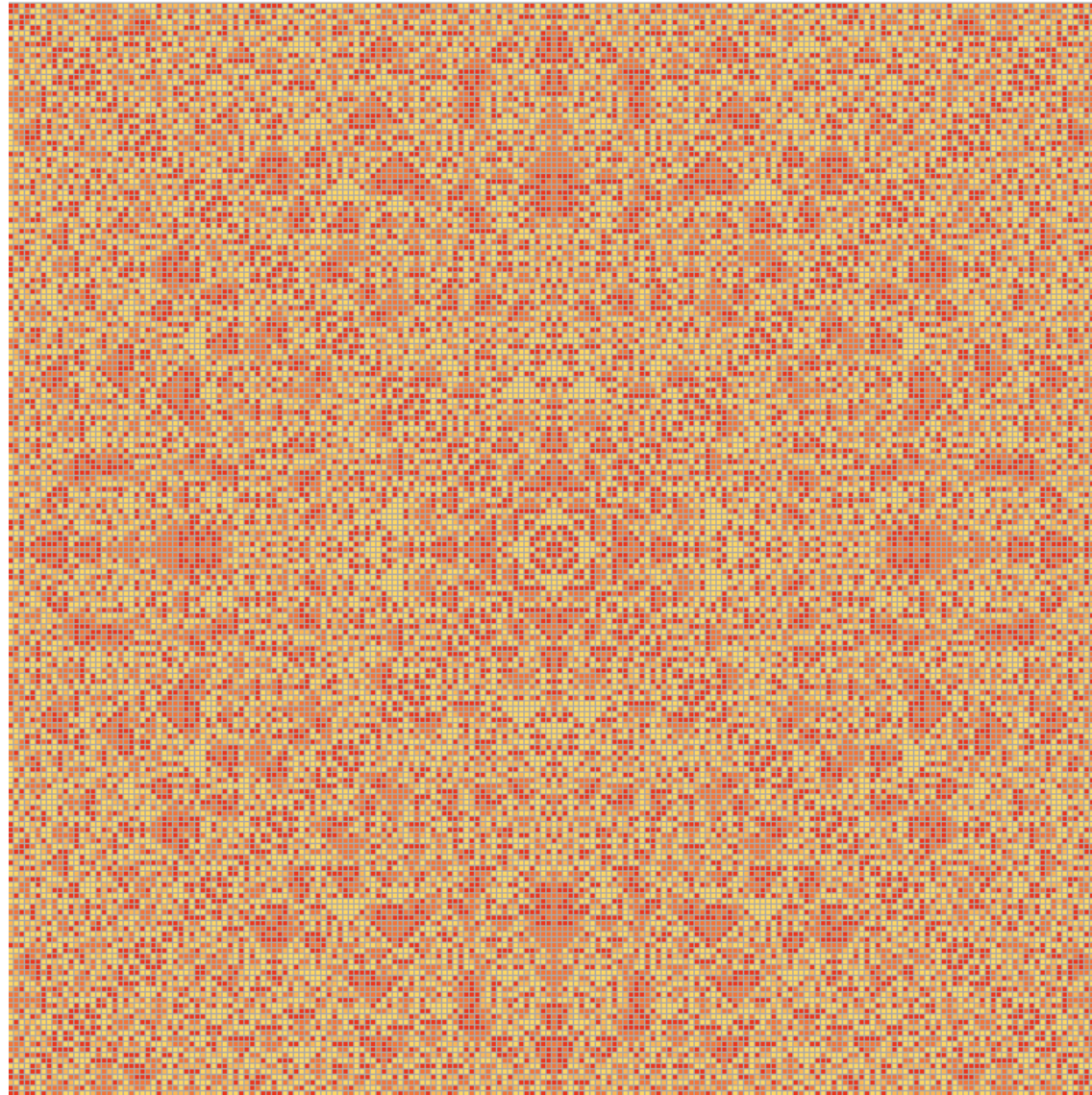
Global Start Rules Action Color

Grid Style: lines Size: 3

Direction: top_down Circular

Rule Input: 3 Cell States: 2

Austoben!



Die Nächsten ?

Dyna Chaos

Julia

Sierping Spiro