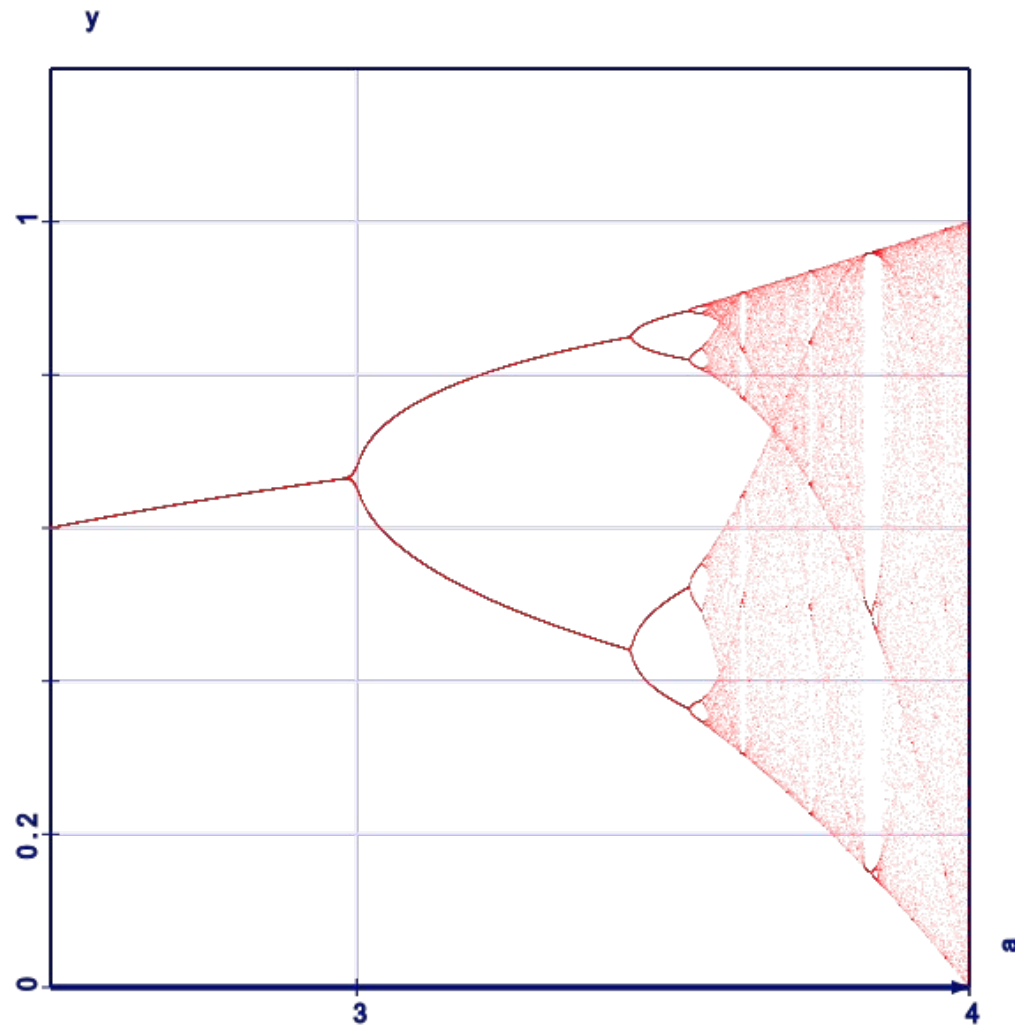


Mein Plot Modul



Mein Plot Modul

1. SVG::Chart

2. Chart

Why SVG

SVG is text (XML)

human readable (debug)

pure perl modul

install = copy = hackable

Why SVG

80-200kB plot file

10k dots

= 17MB = 0.8 MB .zip

spec resolution later

Why SVG

aliasing

select, color, rotate fonts

SVG::Chart

autosize, autocolour,
auto labeling (shrink),
optional axis, grid
dot shapes, log scaling

SVG::Chart

learned so much
due these talks

=>

API rewrite

Chart

uses GD for JPG / PNG

professional 90'ies look

solid Docs in LaTeX PDF HTML

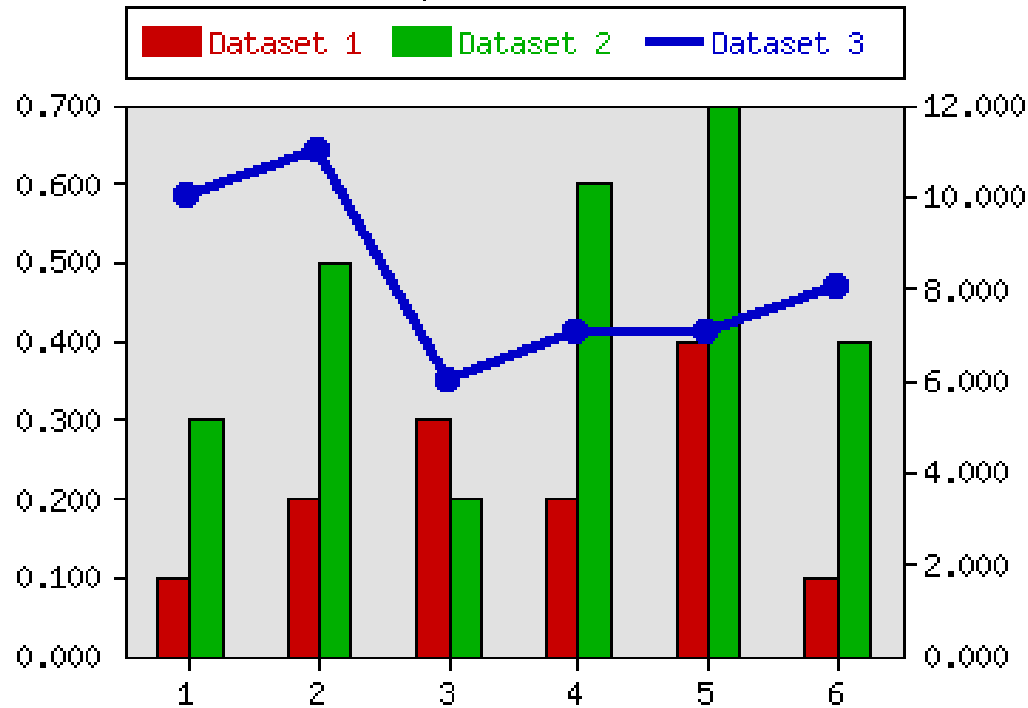
Chart

nice OO Design:

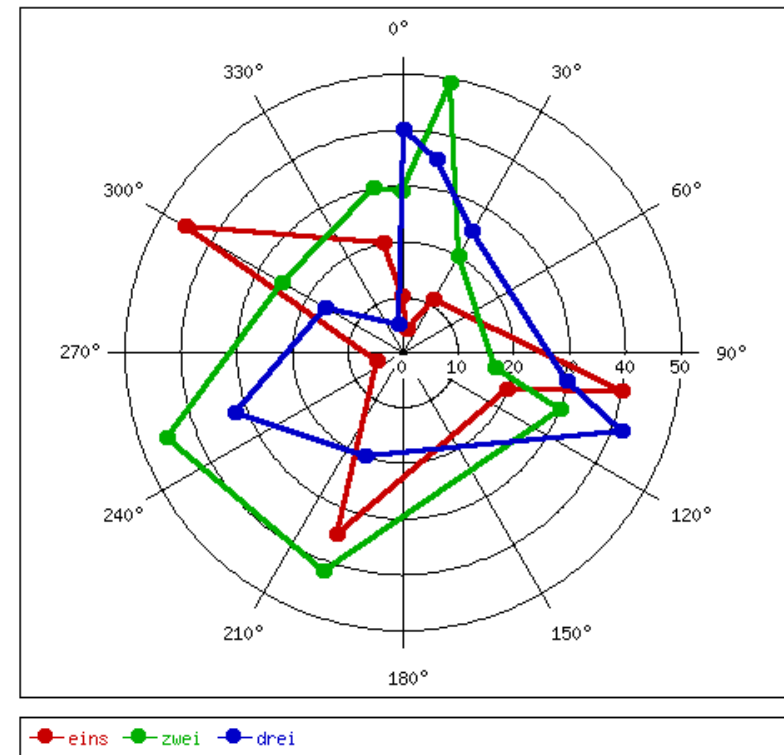
**Bars, Composite, Direction,
ErrorBars, HorizontalBars, Lines,
LinesPoints, Mountain, Pareto, Pie,
Points, Split, StackedBars, (polar coor)**

Chart

Composite Chart

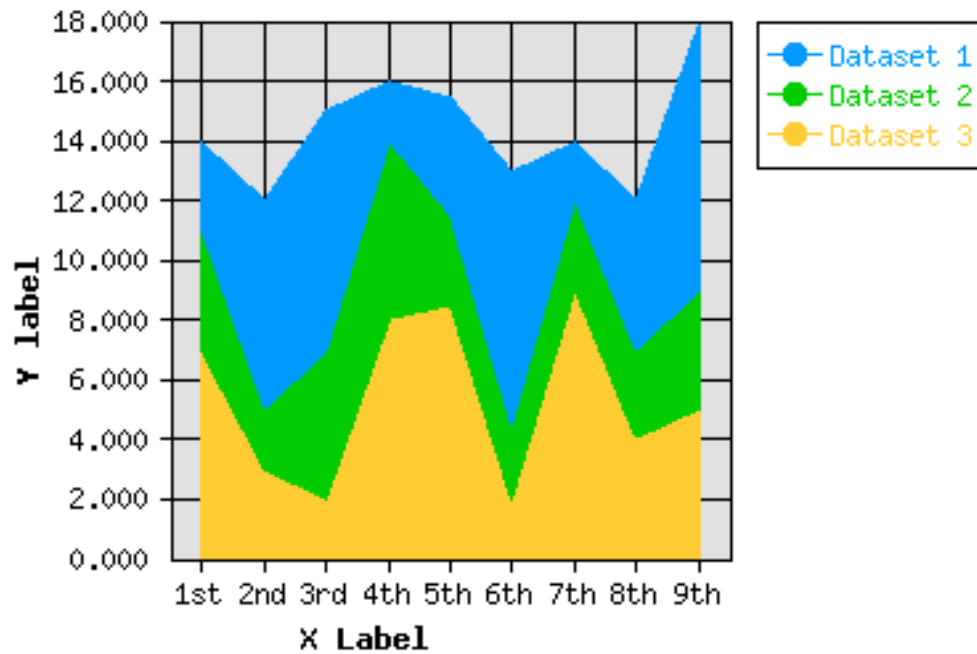


Direction Demo

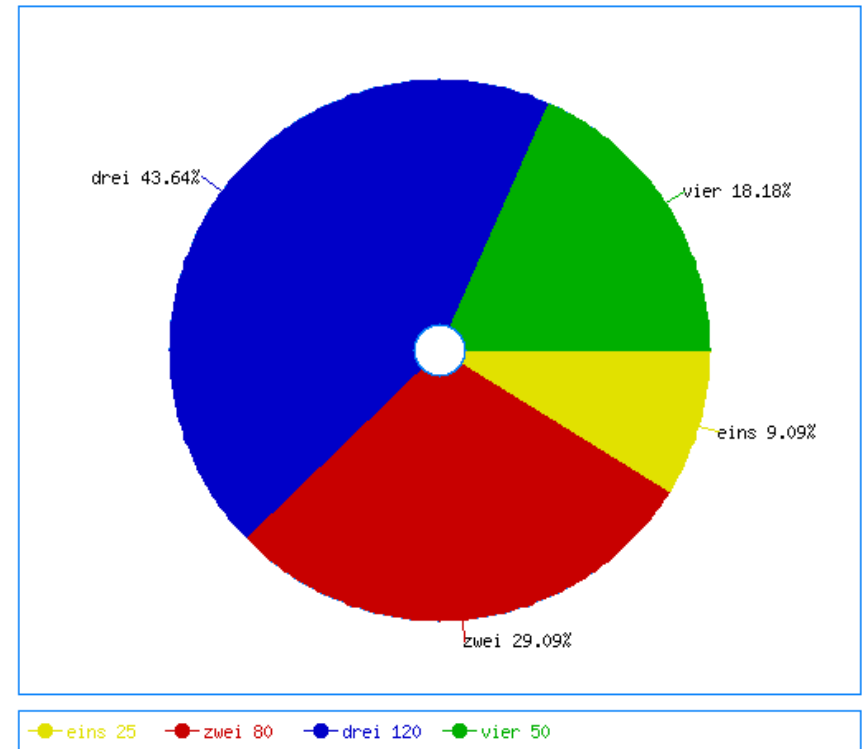


Chart

Mountain Chart



Pie Demo Chart



Chart

**! Finding Chart on
cpanmetadb failed
(& website defunct)**

Chart

from '90 - last release 2015

Bundesamt für Kartographie und Geodäsie,
Geodätisches Observatorium Wettzell

CPANID: CHARTGRP

Chart



Chart

so I wrote a mail

...

and one day later

Chart

**I am the official
maintainer**

I did so far:

github.com/lichtkind/Chart

make a modern distro

closed 4 issues

uploaded 2.400.5

Next plans

easy access to pleasant

and modern colors

fonts, aliasing

box/ violine charts

General Direction

combine chart types

be perlish (creative)

fast & low dependency

starting point

eye friendly colors

well designed pallets

some color computat.

starting point

write 3 simple code .pm

professional look

next goal: coordinates

Subjekt

Thank You

